



*The best place to develop
your dream, your project, your company*



We are a **scientific and technological park** dependent on the **Cabildo de Tenerife**, which detects and trains the professional talent that all companies seek. We face the challenges of a more competitive island for the next future, and therefore prepare the 2030 digital society, through training and specialization programs for children, youngsters and current professionals, and innovation outreach.

In addition, we offer unique conditions for innovative companies in a globalized world. We offer three business incubators and one coworking space to entrepreneurs and companies, with more than 4000m² prepared to support business projects and development in different areas:

1. Astrophysics, Sustainability and Renewable Energies.
2. Biomedicine, Biotechnology and Health.
3. ICTs, Software y Audiovisual.
4. Technologies applied to Tourism.

We also have three bigger locations: **Intech Santa Cruz, Intech La Laguna, Intech Granadilla**, 600,000 m² designed to make your dreams, projects and company come true.

Intech Tenerife

- | | |
|--|--|
| ● Invests in people, projects and infrastructures. | ● Develops technological training programs for young people. |
| ● Promotes R & D & i and entrepreneurship. | ● Generates qualified employment. |
| ● Improves competitiveness and business cooperation. | ● Promotes knowledge transfer. |

Why settle in the INtech Tenerife science and technology park?

Foto: Turismo Tenerife



Geostrategic situation: the most important tourist destination for Europe, with 12 million passengers per year, 160 direct air routes, 3 ports and 2 international airports.



First level connectivity and computing infrastructures.



Best taxation in Europe, including:

- **Special Zone of the Canary Islands (ZEC):** 4% Company Tax for registered companies.
- **Free Zone (ZFT):** Exemptions from import and export rights.
- **7% IGIC versus 21% VAT**
- **RIC (Investment Reserve):** allows up to 90% of tax savings.
- **No withholding taxes**
- **Large deductions (up to 45%)** for investment in R & D, Innovation Activities and Audiovisuals



R&D and Innovation transfer of cutting-edge research by the prestigious Canary Islands Astrophysics Institute (**IAC**), the University of La Laguna (**ULL**), the **ITER** and the Spanish Research Council (**CSIC**), among others.



Mechanisms of acceleration and accompaniment of companies.



Top-level professionals on demand.



AND high quality of life.

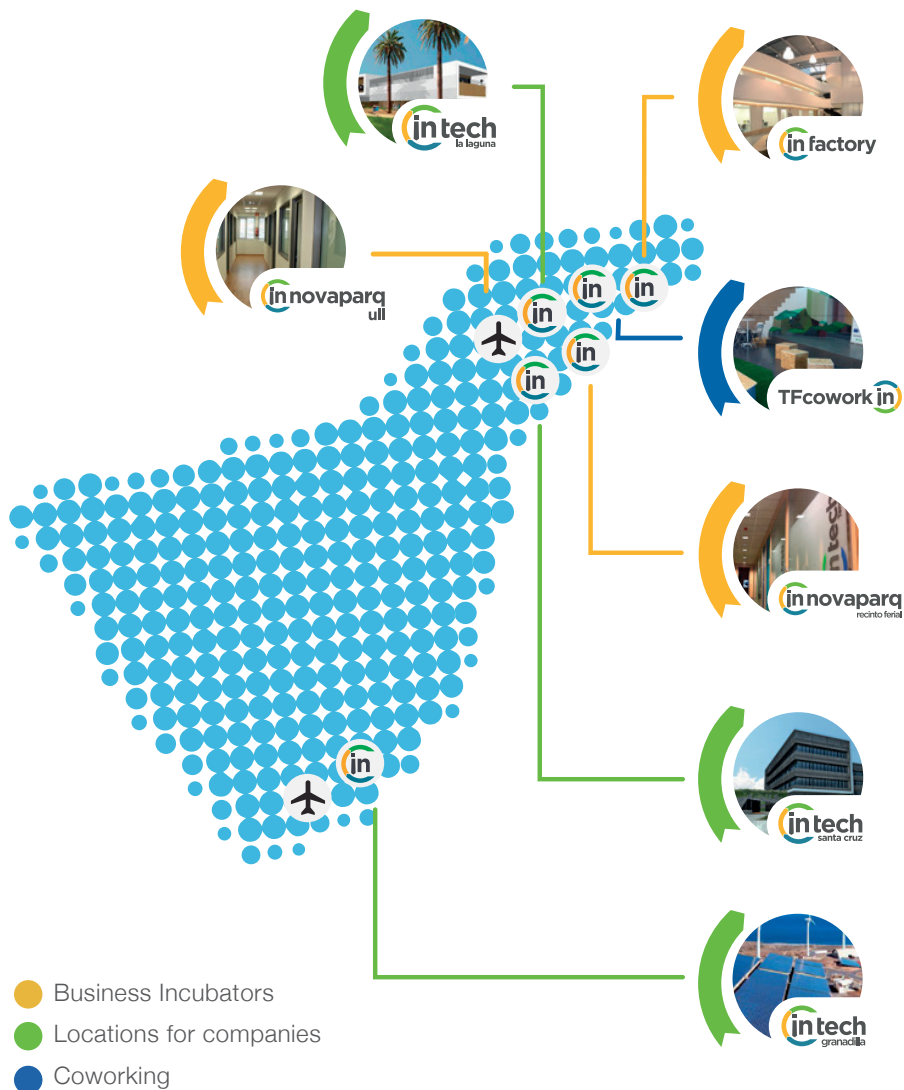




***We offer unique conditions
for innovative companies
in a globalized world***



600,000 m² available for you,
for your startup, your R & D project or your company



AREAS AND FACILITIES FOR COMPANIES



Intech Santa Cruz is the main Park site, of INtech Tenerife located in Santa Cruz de Tenerife, 15 minutes from the TFN airport. INtech offers an area of more than 260,000 m² to companies and technology-based entities for research, development and innovation projects, mainly in the fields of Biotechnology, Biomedicine and Health, Information and Communication Technologies (ICTs), and Innovation in Tourism.

In a first phase, it will count with a headquarters building with a total built area of 6,600 m² and a multi-company building with 17,700 m². The facilities will include offices, an assembly hall, and complementary services such as a nursery, gymnasium and cafeteria.





This infrastructure, located 10 minutes away from the TFN airport, includes an urban park and two buildings that will serve as headquarters for technological centers. The facilities are designed to support research groups and companies that carry out technological development and innovation projects, in particular linked to nanoscience, sustainability, biodiversity and astrophysics. Knowledge transfer between the academic world and business will be favoured.

Intech La Laguna will host two technological centers:

- The **IACtec**, related to the Astrophysical Institute of the Canary Islands (IAC).
- The **Technological Center of Nanomaterials and Sustainability**, related to the University of La Laguna.

These facilities occupy a $35,000 \text{ m}^2$ area, which include an urban park to enjoy your spare time.

FACILITIES FOR COMPANIES



These facilities are located in Granadilla de Abona (town in the south of Tenerife), five minutes away from the international TFS airport, and very close to Granadilla Free Port (Puerto Franco de Granadilla).

IN-Tech Granadilla offers a 306,000 m² area for the installation of companies and the execution of projects in the fields of Renewable Energy, Environment, Earth and Cosmos, among others.

The Granadilla facilities, which already host the **Technological Institute of Renewable Energies (ITER)**, include the Teide HPC Supercomputer, the second most powerful in Spain, and the **DALIX Datacenter**.



FACILITIES FOR ENTREPRENEURS

**INtech Tenerife
also has the
best facilities for
entrepreneurs**

BUSINESS INCUBATORS

We have three business incubators with more than 4,000 m² in the metropolitan area, an average of 30 companies hosted and common spaces such as meeting room, training rooms, laboratory, workshops and office among others.



FACILITIES FOR ENTREPRENEURS



Located in the Central Campus of the University of La Laguna (ULL), preferably hosts companies related to the University of La Laguna (e.g. spin-offs, companies developing joint projects with ULL, etc).



Located in Tenerife capital, is five minutes away from the Port and the main bus and tram station, and ten minutes away from TFN airport. It is also located in front of the swimming pool complex Parque Marítimo and the Palmetum botanical garden.



Located in Santa Cruz Fishing Dock, and five minutes away from the beach, provides a makerspace, a lab for computational thinking, and an audiovisual training room.





COWORKING SPACE

TF coworkIN is an open, flexible and dynamic, space that **INtech Tenerife** offers to professionals and entrepreneurs for the promotion of innovative business projects under the collaborative work culture.

In these 670 m²-facilities, you can find individual work areas, modular work rooms, training rooms, two meeting rooms, a presentation area, office, lockers and Internet access.



VIRTUAL INCUBATOR

Moreover, the companies have the option of installing themselves in **INtech Tenerife** in the virtual modality, with part-time share of offices and services (e.g. use of offices and common rooms at chosen times) but a fixed legal address.





***SPECIALIZED SERVICES PROVIDE
SUPPORT FOR COMPANIES***

SERVICES FOR COMPANIES

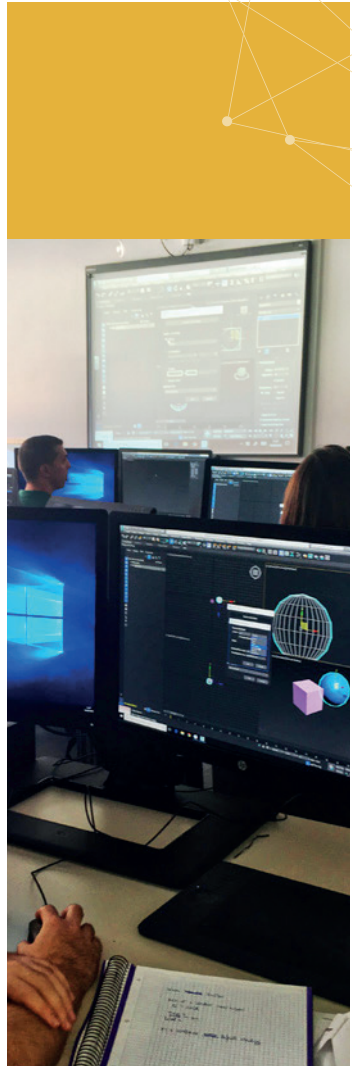
In addition to the basic maintenance and connectivity services and unlimited access 24 hours a day, 365 days a year, **INtech Tenerife** offers the following special services:

IN JOB

With the "**IN Job**" database, companies that demand specialized personnel have quick access to professional profiles. The database is constantly updated, in order to provide, in less than 48 hours, qualified personnel to companies wishing to establish themselves in Tenerife.

TRAINING OF SPECIALIZED PROFESSIONAL PROFILES

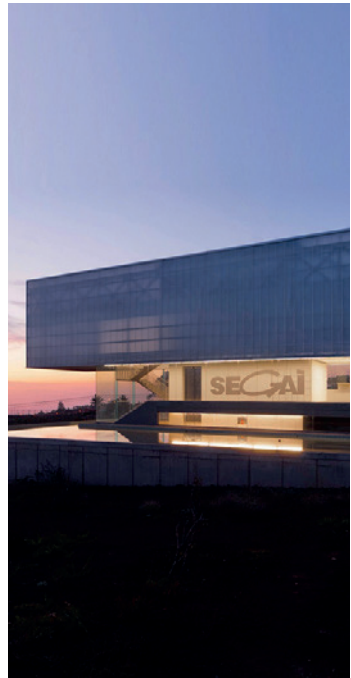
At **INtech Tenerife** we train professionals in emerging sectors demanded by the companies installed in our facilities. Currently, there are training programmes in 2D or 3D animation and modeling; specific profiles of computer science or Big Data, new professions linked to eSports, etc. In addition, we offer economic incentives to train professionals in demanded areas.



SERVICES FOR COMPANIES

ACCESS TO R & D SUPPORT FACILITIES

The General Research Support Services of the University of La Laguna (SEGAI) and other institutions (CSIC, etc) provide scientific, instrumental and technical support to research groups and private companies. SEGAI offers 33 specialized services for about a hundred industrial applications in several areas, such as Analysis and Treatment of Water, Biomedical Research, Electronics, Pharmaceutical/Chemical or AgriFood Industries, Quality Control, etc. Moreover, the companies installed in **INtech Tenerife** can use these services at a discounted price.



THE TEIDE HPC SUPERCOMPUTER

The Teide supercomputer is the second most powerful in Spain, and one of the best in the world. Its high process capacity can enhance the research carried out by public and private research centers, and their national and international impact.



Teide HPC has been used for the rendering process of films such as ‘Ozzy’ and ‘Capture the Flag’ and also develops projects with the **Institute of Astrophysics of the Canary Islands (IAC)**, the **University of La Laguna (ULL)**, the **European Organization for Nuclear Research (CERN)**, the **European Space Agency (ESA)** or the **European Molecular Biology Laboratory**.

VISIBILITY AND LOCAL NETWORKING

Intech Tenerife offers a support service to companies established therein for their integration into the regional innovation network. For instance, it arranges visits, meetings and contacts on demand. Likewise, it promotes their visibility through the most relevant mass media.

SPECIALIZED ADVICE

We provide support to entrepreneurs and companies with viable and innovative business projects to request financing from private investors or public entities such as **SODECAN**. Lines of financing (www.sodecan.es/en/) include traditional ones such as microcredits or guarantee lines, and those aimed at tech-based company start-up and expansion, such as technological entrepreneur or co-investment lines. In addition,



to support R+D+i projects in established companies, there are innovation, research and development and self-consumption and energy efficiency lines

FACILITIES

In order to simplify and favor the adaptation of the personnel of companies installing in Tenerife, we provide advice on housing, schooling, day care centers, etc.

INtech Tenerife offers a complete acceleration program to promote the creation and growth of startups, at any maturity stage



PROGRAMA STARTIN

The **STARTIN** program consists of four phases:

- 1.** The first one carries out **acceleration programs in strategic sectors**, such as those developed by the foundation Incyde.
- 2.** The second phase includes training programs aimed at **entrepreneurship in the early stages**, such as the entrepreneurs' support program jointly developed with EOI (School for Industrial Organization) and held at the TF coworkIN facilities.
- 3.** The third phase includes the annual investment training program **Tenerife INVierte** developed by **INtech Tenerife** since 2009 in order to promote entrepreneurship and new business projects with a technological base.

INtech Tenerife selects the best start-ups and technology-based or technology-based or entrepreneurial projects.



INVESTMENT CLUB TENERIFE INVIERTE

The Investment Club Tenerife INvierte is a network of investors and entrepreneurs created from INtech Tenerife. INtech arranges meetings between investors interested in technology-based projects (e.g. startups) and entrepreneurs interested in financing and managing the growth of their companies. The Club offers investors an updated pull of the startups with the most appropriate investment proposals

It also prepares the entrepreneurs to attract investments, and accompanies them during the investor search process.

4. The fourth phase includes advice and support for the installation in INtech company incubators or other INtech facilities.





PROGRAMS

*Technological training as
commitment to the future.*



TRAINING AND SPECIALIZATION

Talent recruitment and training is a priority for the Tenerife 2030 strategy, implemented by the Cabildo Insular de Tenerife, mainly through **INtech Tenerife**. We create professionalized and specialized human capital in technological and innovative sectors that will constitute an economic engine in the near future. **INtech Tenerife** also trains the population for the 2030 digital society, with actions for a broad public, from children and young people to professionals and entrepreneurs.

PROGRAMS:

Children	<ul style="list-style-type: none">• Computational Thinking Laboratory
Young people	<ul style="list-style-type: none">• Canarias FLL (First Lego League)• Teen INtech• School of Innovation• TLP (Tenerife Lan Party) Weekend
Professionals	<ul style="list-style-type: none">• 2D and 3D Animation Training• E-Sports training• Leadership, Innovation and Creativity course (LINC course)• Master “Business Intelligence and Big Data”• Imagine 7 Islands• Master in Cybersecurity• Master in Digital Transformation



INNOVATION OUTREACH

INtech Tenerife holds a firm commitment to promote innovation outreach, as a basis for implementing the culture of innovation on the Island.

ACTIONS:

- Innovation Forum fi2
- Innovation Observatory
- Startup Weekend
- Science fairs



Download our app



www.intechtenerife.es



info@intechtenerife.es



[@IntechTenerife](https://twitter.com/IntechTenerife)



[Intech Tenerife](https://www.linkedin.com/company/intech-tenerife)



[@IntechTenerife](https://www.facebook.com/IntechTenerife)



[Intech Tenerife](https://www.youtube.com/intechtenerife)